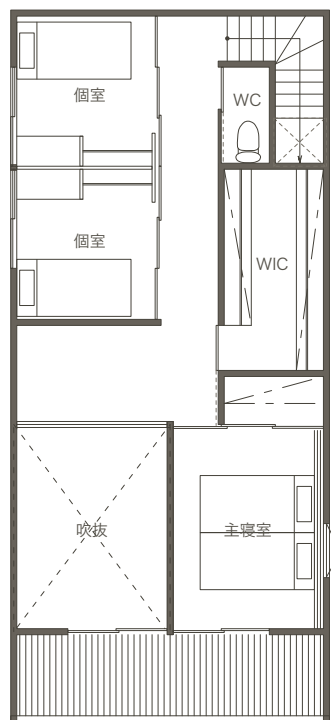
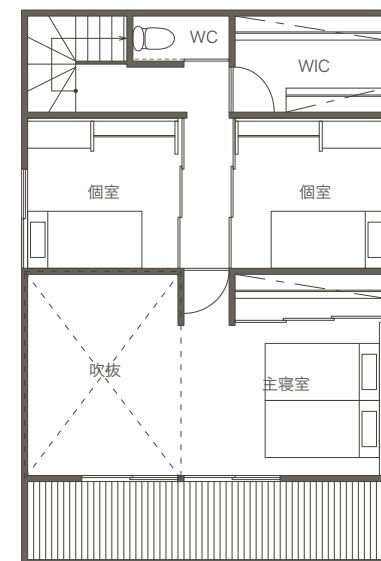
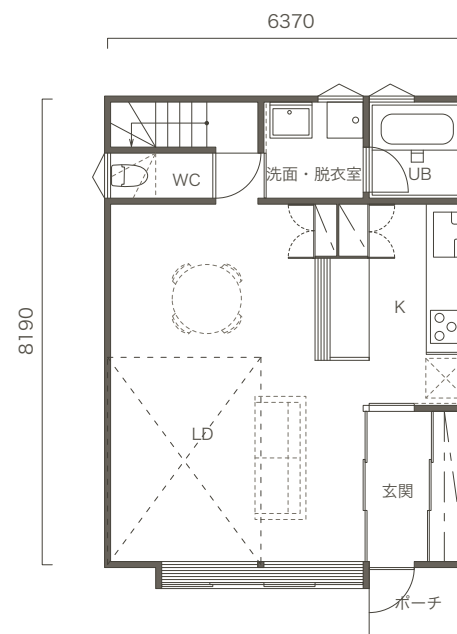


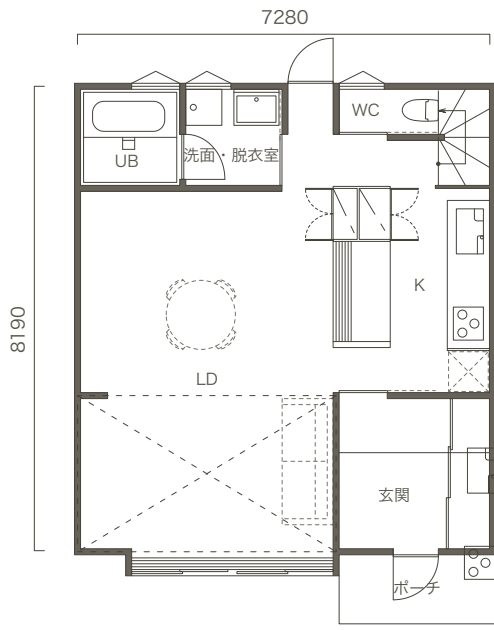
南玄関 plan-1 3.0×6.0 18.0T



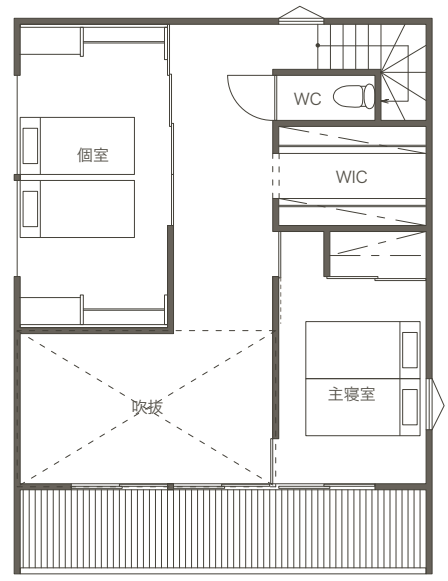
南玄関 plan-2 3.5×4.5 15.75T



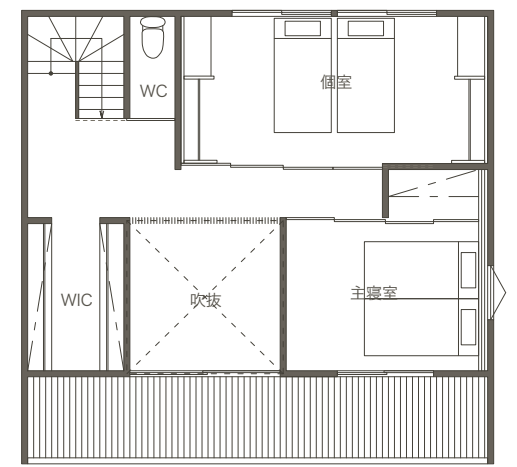
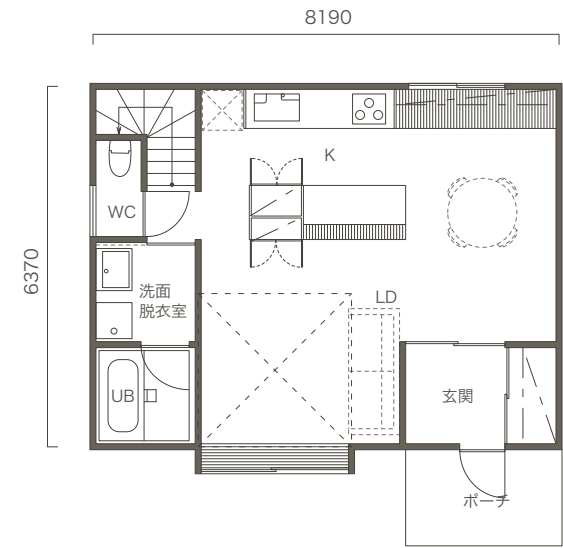


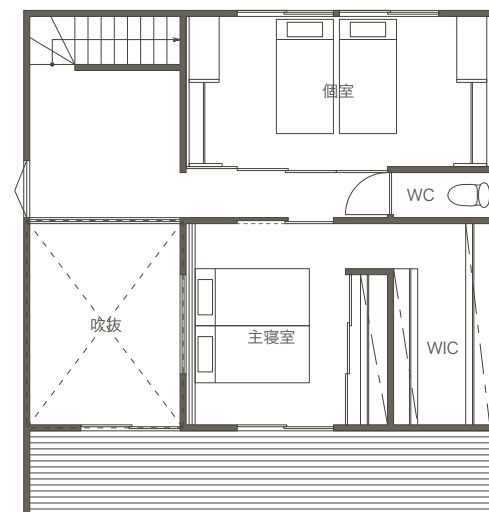
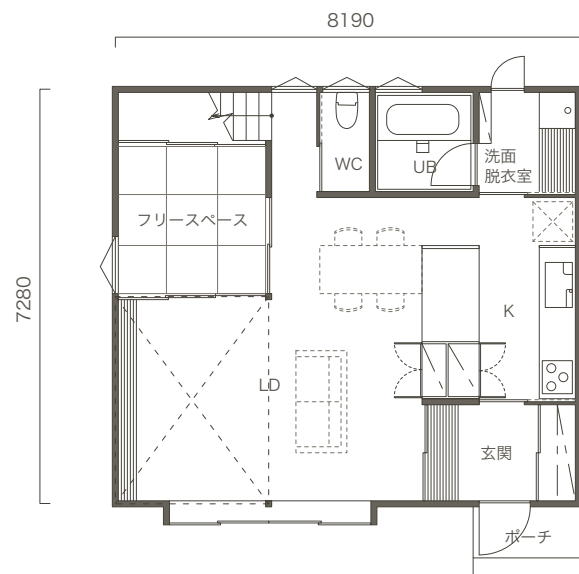


南玄関 plan-5 4.0×4.0 16.0T

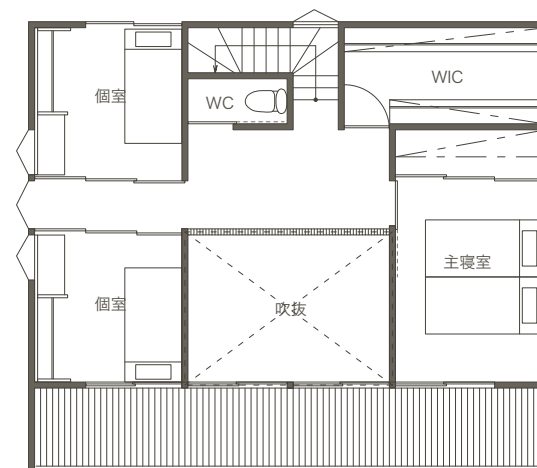
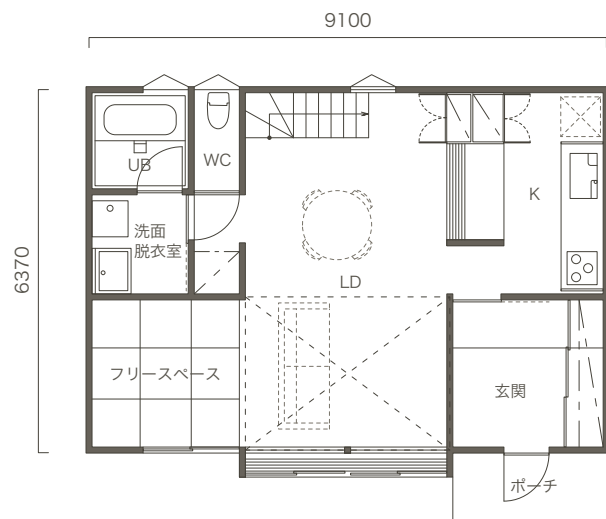


南玄関 plan-6 4.5×3.5 15.75T





南玄関 plan-7 4.5×4.0 18.0T



南玄関 plan-8 5.0×3.5 17.5T